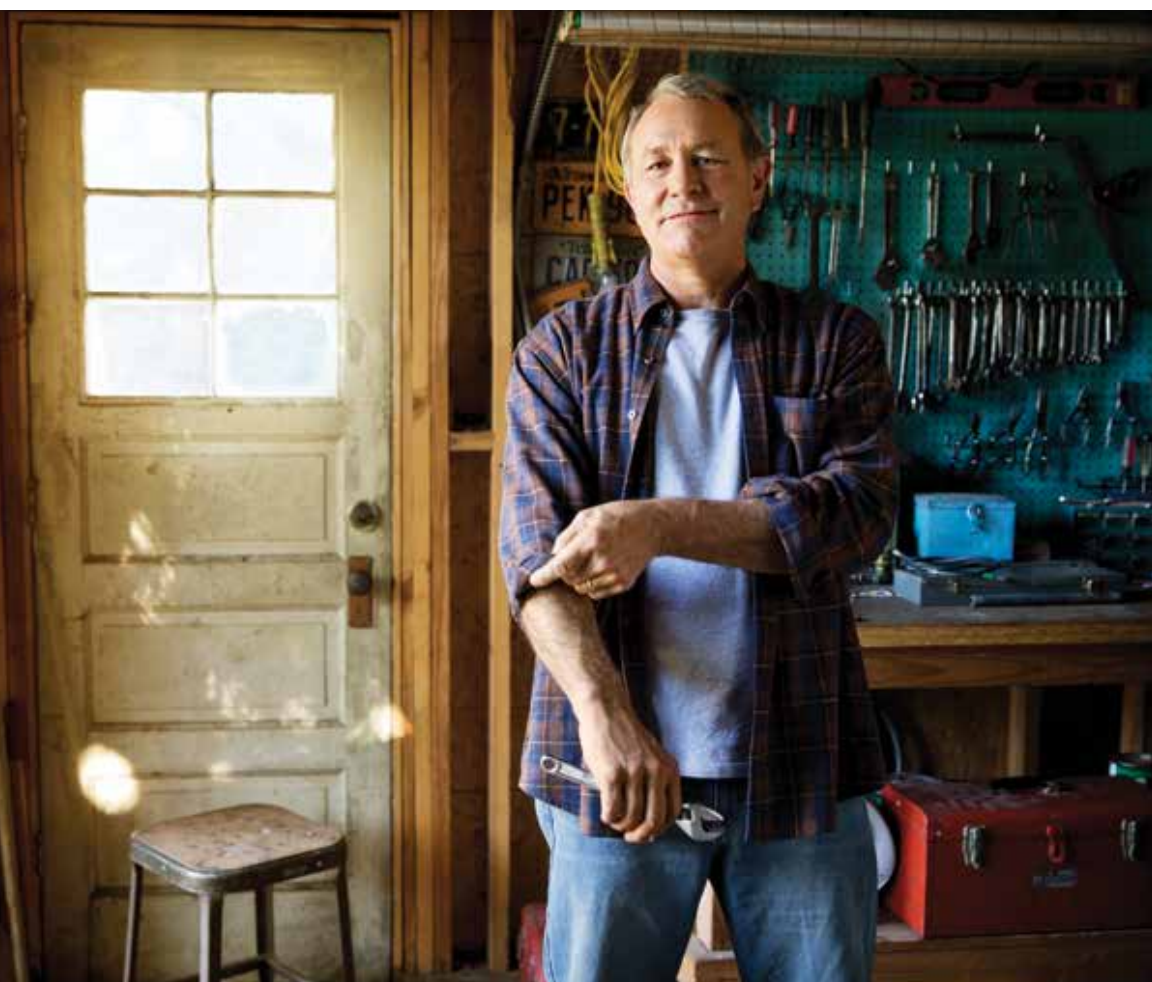


# LEARN HOW TO **JUMPSTART** YOUR IMMUNE SYSTEM TO ATTACK YOUR ADVANCED PROSTATE CANCER

Starting your treatment with **PROVENGE**  
(sipuleucel-T)



For more information visit [www.PROVENGE.com](http://www.PROVENGE.com)

Please see inside front cover and page 6 for Important Safety Information.

# WITH **PROVENGE**, YOU ARE TAKING THE FIGHT AGAINST **ADVANCED PROSTATE CANCER** INTO YOUR OWN HANDS

**INDICATION:** PROVENGE® (sipuleucel-T) is an autologous cellular immunotherapy indicated for the treatment of asymptomatic or minimally symptomatic metastatic castrate-resistant (hormone-refractory) prostate cancer.

## Before getting PROVENGE, tell your doctor if you:

- Have heart problems
- Have lung problems
- Have a history of stroke
- Take any other medicines including prescription and nonprescription drugs, vitamins, and dietary supplements.

## What are the possible side effects of PROVENGE?

PROVENGE infusion can cause serious reactions. Tell your doctor right away if you:

- Have breathing problems, chest pains, racing heart or irregular heartbeats, high or low blood pressure, dizziness, fainting, nausea, or vomiting after getting PROVENGE. Any of these may be signs of heart or lung problems.
- Develop numbness or weakness on one side of the body, decreased vision in one eye or difficulty speaking. Any of these may be signs of a stroke.
- Develop symptoms of thrombosis which may include pain and/or swelling of an arm or leg with warmth over the affected area, discoloration of an arm or leg, unexplained shortness of breath or chest pain that worsens on deep breathing.
- Get a fever over 100°F, or redness or pain at the infusion or collection sites. Any of these may be signs of infection.

The most common side effects of PROVENGE include chills, fatigue, fever, back pain, nausea, joint ache, and headache. These are not all the possible side effects of PROVENGE treatment. For more information, talk with your doctor.

Call your doctor for medical advice about side effects. You may report side effects to the FDA at 1-800-FDA-1088 or [www.fda.gov/medwatch](http://www.fda.gov/medwatch).

For more information on PROVENGE, please see the Full Prescribing Information or call 1-877-336-3736.

## TABLE OF CONTENTS

|  |    |
|--|----|
| What is PROVENGE? . . . . .                        | 2  |
| How does PROVENGE therapy work? . . . . .          | 4  |
| What are the benefits of PROVENGE? . . . . .       | 5  |
| The side effects of PROVENGE. . . . .              | 6  |
| Is PROVENGE right for you? . . . . .               | 7  |
| When is the right time for PROVENGE? . . . . .     | 8  |
| Before you begin your PROVENGE treatment . . . . . | 9  |
| Financial support . . . . .                        | 10 |
| The enrollment process . . . . .                   | 12 |
| The treatment process . . . . .                    | 13 |
| Preparing for treatment . . . . .                  | 14 |
| Your PROVENGE appointments . . . . .               | 15 |



**PROVENGE**<sup>®</sup>  
(sipuleucel-T)

# WHAT IS PROVENGE?

## PROVENGE is the first and only FDA-approved immunotherapy for advanced prostate cancer

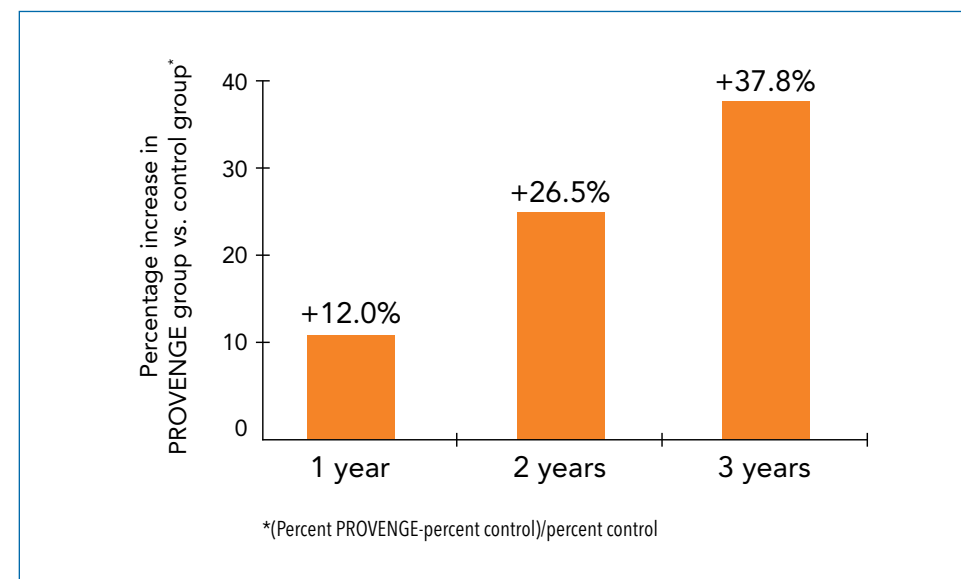
PROVENGE is the only personalized treatment that is clinically proven to help extend life in certain men with advanced prostate cancer. PROVENGE is an immunotherapy that takes your own immune cells and reprograms them to attack your advanced prostate cancer. This process delivers a treatment designed just for you.

## PROVENGE has proven results as an advanced prostate cancer immunotherapy

In the clinical trial that supported FDA approval, more men treated with PROVENGE lived longer than men not treated with PROVENGE.

- More men in the PROVENGE group were alive 3 years after the start of the study than men not treated with PROVENGE
- PROVENGE reduced the risk of death by 22.5% for patients in the PROVENGE group
- Only 1.5% of men discontinued treatment with PROVENGE due to side effects

## Overall survival benefit for PROVENGE



## Percentage of patients alive: ITT Population (95% CI)

|          | 1 year                         | 2 years                        | 3 years                       |
|----------|--------------------------------|--------------------------------|-------------------------------|
| PROVENGE | 81.1%<br>(76.9, 85.3)<br>n=274 | 52.1%<br>(46.4, 57.7)<br>n=129 | 31.7%<br>(25.7, 37.8)<br>n=49 |
| Control  | 72.4%<br>(65.6, 79.1)<br>n=123 | 41.2%<br>(33.5, 49.0)<br>n=55  | 23.0%<br>(15.5, 30.5)<br>n=19 |

ITT = intent-to-treat



Please see inside front cover and page 6 for Important Safety Information.

**PROVENGE**<sup>®</sup>  
(sipuleucel-T)

# HOW DOES **PROVENGE** THERAPY WORK?

PROVENGE is an immunotherapy that is designed to reprogram your body's immune cells to attack advanced prostate cancer cells. By jumpstarting immune cells already in your body, PROVENGE therapy helps you take the fight against advanced prostate cancer into your own hands.

## Important information about PROVENGE and PSA levels

The prostate-specific antigen (PSA) test is often used to monitor progression of prostate cancer and how effectively your treatment is controlling the disease. However in the PROVENGE clinical trial, the main goal was not to lower PSA levels—it was to extend life. So even if your PSA levels do not go down, PROVENGE may help you live longer.

Therefore, you shouldn't worry if your PSA levels don't change, since changes in PSA levels are not indicative of how well your PROVENGE treatment is working. Be sure to talk to your doctor if you have any questions or concerns about your PSA levels.

*"I felt very comfortable and felt that I was being followed through by experts who just did not leave any stone unturned."*

**Rollin**  
PROVENGE Patient  
Retired US Army Chaplain

Please see inside front cover and page 6 for Important Safety Information.

# WHAT ARE THE BENEFITS OF **PROVENGE**?

PROVENGE is a personalized treatment process that collects and reprograms your body's own immune cells. Other important benefits of PROVENGE are:



### **PROVENGE is proven to help men live longer**

Three years after the start of a clinical trial, more men treated with PROVENGE were alive than men not treated with PROVENGE



### **Most side effects of PROVENGE are generally mild to moderate**

The most common side effects are chills, fatigue, fever, back pain, nausea, joint ache, and headache



### **PROVENGE has a short treatment course**

Therapy can be completed in about a month with only 6 appointments

**PROVENGE**<sup>®</sup>  
(sipuleucel-T)

# PROVENGE IS GENERALLY MANAGEABLE, BUT THERE ARE SOME SIDE EFFECTS TO CONSIDER

As with all advanced prostate cancer treatments, there are potential risks associated with PROVENGE. Side effects are generally mild to moderate and most lasted only a day or two for the men who took part in the clinical study. **Only 1.5% of the men discontinued their treatment with PROVENGE because of side effects.**

The most common side effects include:

- Chills
- Back pain
- Joint ache
- Fatigue
- Nausea
- Headache
- Fever

In clinical studies, some men experienced more serious side effects:

- Chest pain
- Racing heartbeat
- Irregular heartbeat
- Dizziness
- Nausea
- Vomiting
- Stroke
- Thrombosis

These are not all the possible side effects of PROVENGE treatment. For more information, talk with your doctor.

## IS PROVENGE RIGHT FOR YOU?

**PROVENGE is a treatment option for certain men with metastatic castrate-resistant prostate cancer**

You may be able to receive PROVENGE therapy if:

- You are on hormone therapy and have rising PSA levels
- Your cancer has spread from the prostate to other places, such as your bones
- You are not taking narcotics for cancer-related pain



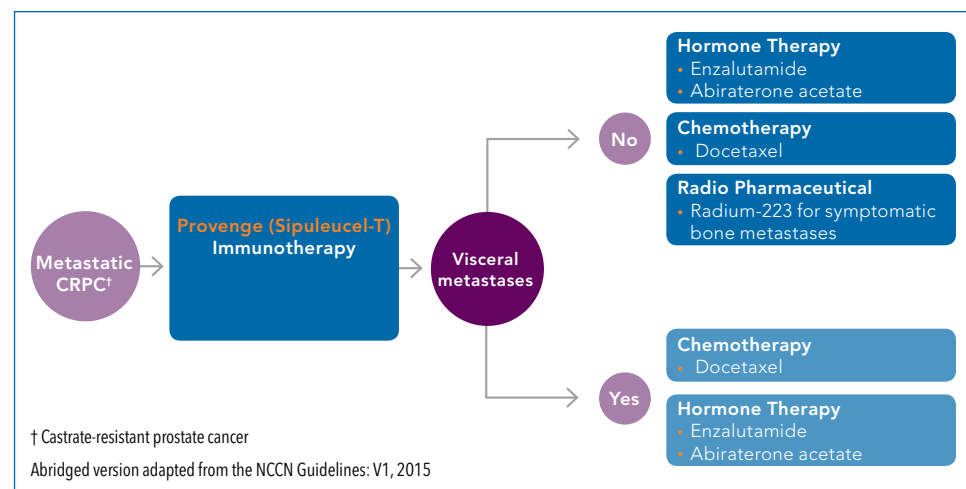
# WHEN IS THE RIGHT TIME FOR **PROVENGE**?

Since PROVENGE is an immunotherapy that boosts your immune system, it should be used early on in your advanced prostate cancer treatment plan.

In fact, The National Cancer Care Network guidelines recommend using PROVENGE first as it is the only treatment option for advanced prostate cancer for men with few or no cancer-related symptoms, listed first, that may help you live longer.<sup>1</sup>

After your PROVENGE treatment, other options such as radiotherapy, hormone therapy, and chemotherapy, may still be available to you. PROVENGE simply boosts your immune system first, to get it into the fight against your advanced prostate cancer.

## A possible prostate cancer treatment path\*



\*This graphic represents one possible path and will not apply to all patients.

# BEFORE YOU BEGIN YOUR **PROVENGE** TREATMENT

Tell your doctor about any medical problems you have, including heart problems, lung problems, or if you have had a stroke. In addition, you should tell your doctor about all of the medicines you take, including prescription and nonprescription drugs, vitamins, and dietary supplements.



**PROVENGE**<sup>®</sup>  
(sipuleucel-T)

# NEED FINANCIAL SUPPORT? PROVENGE HAS YOU COVERED



**Almost 70% of patients receiving PROVENGE are expected to have minimal to no out-of-pocket costs<sup>2</sup>**

There are many types of insurance, so be sure to speak with your doctor's office to help you throughout the financial process. You can also get more information about your coverage, as well as whether you are eligible for additional financial support during treatment with PROVENGE, by calling 1-877-336-3736.

Coverage information is current as of March 2014. Your insurance coverage will be dependent upon several factors such as where you live and your health plan's insurance benefit design. Please contact 1-877-336-3736 or your plan administrator for more information.

**PROVENGE** is covered by Medicare as well as most other commercial plans. Learn more about **PROVENGE** coverage at [www.PROVENGE.com](http://www.PROVENGE.com).

Please see inside front cover and page 6 for Important Safety Information.

## OUR COMMITMENT TO PATIENTS WITH LIMITED FINANCIAL RESOURCES

PROVENGE wants to make sure help is available for patients who need financial assistance.

### Financial support programs include:



**PROvide** – A new patient assistance program for patients with commercial insurance. PROvide supports eligible patients by covering any combination of cost—co-pays, co-insurance, or deductible costs—to a maximum of \$6000 over the 3 PROVENGE treatments\*



**Co-pay assistance for patients with Medicare** – Help with co-pays, co-insurance, and deductible costs for eligible patients†



**Support for patients without coverage for PROVENGE** – Eligible patients may be able to get PROVENGE free of cost through the PROVENGE Uninsured Patient Program\*



**Travel cost assistance** – Help with treatment-related travel costs for eligible patients†

For more information, please call Financial Support Services at 1-877-336-3736.

\* PROvide, the commercial co-pay card program, and the Uninsured Patient Program eligibility criteria can be changed or program can be discontinued at any time at the sole discretion of Dendreon, the maker of PROVENGE.

† Co-pay and travel assistance foundations provide assistance regardless of the choice of medicine, and decisions are based on financial need and according to criteria established by individual foundations. Dendreon can assist patients by referring them to these independent organizations. Dendreon cannot guarantee that patients will be eligible for or receive assistance after referral. Dendreon does not have controlling or managerial influence on these independent organizations.

**PROVENGE**<sup>®</sup>  
(sipuleucel-T)

# YOUR PROVENGE ENROLLMENT PROCESS

When you and your doctor have decided that PROVENGE is right for you, your doctor's office will help you fill out the necessary enrollment forms to begin taking the fight against advanced prostate cancer into your own hands. Your doctor's office will also help you set your PROVENGE treatment schedule. Once your treatment schedule has been set, you will receive your complimentary Patient Comfort Kit, which will assist you and your care partner during your PROVENGE treatment appointments.

At this point you can also begin applying for the various types of financial support services available to you. Please refer to pages 10 and 11, or visit [www.PROVENGE.com](http://www.PROVENGE.com), to learn more about our financial support services.



**Isadore**  
PROVENGE Patient  
Retired Professional

Please see inside front cover and page 6 for Important Safety Information.

# YOUR PROVENGE TREATMENT PROCESS

Each dose of the PROVENGE treatment process is completely personalized by taking your own blood cells and reprogramming them to jumpstart your immune system. Here's a step-by-step overview of the process:

## Step 1: Cell collection

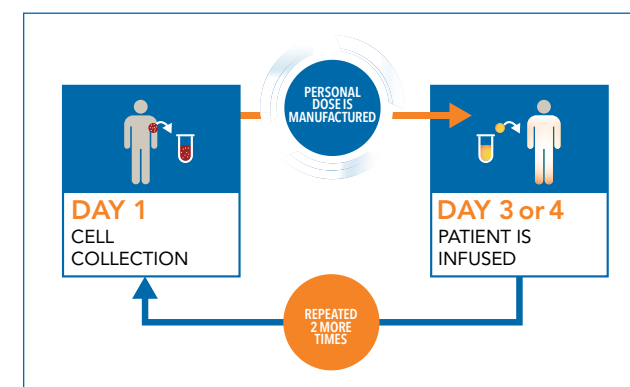
To make each dose, blood will be drawn from your body and passed through a machine that collects a small portion of your immune cells, along with some platelets and a small number of red blood cells. The machine returns the rest of the cells and blood to your body.

- This cell collection process is called leukapheresis and takes 3 to 4 hours
- Your cell collection will take place at a blood center with staff that have been trained to perform the procedure

## Step 2: PROVENGE treatment

Your immune cells are then sent to an FDA-approved manufacturing facility to be made into a dose of PROVENGE specifically for you.

- Each dose of PROVENGE is given about 3 days after your cell collection procedure, and your appointment will take about 2 hours



After 6 appointments, your treatment with PROVENGE is complete.

**PROVENGE**  
(sipuleucel-T)



# PREPARING FOR TREATMENT

The Patient Comfort Kit you receive after your treatment schedule has been set will help you and your care partner relax and pass the time during your appointments. Your Comfort Kit includes a backpack, a day planner, a water bottle, a puzzle book and an anti-stress ball. We recommend bringing these items to your PROVENGE treatment sessions.

## Before your cell collection procedure, you should:



Make sure to drink more water than usual 2 to 3 days before your appointment to stay well hydrated



Avoid drinking caffeinated beverages on the day of each cell collection procedure



Eat a calcium-rich breakfast, which may include yogurt, milk, calcium-fortified orange juice or cereal, bananas, blueberries, or almonds



Wear comfortable, loose-fitting clothing, especially clothing with sleeves that can be raised above the elbow



Have a driver lined up for the ride home since most people feel fatigued after the cell collection procedure

# YOUR PROVENGE APPOINTMENTS

As this sample schedule shows, your time commitment for PROVENGE is only 6 appointments over about a month. After these appointments, no future treatments with PROVENGE are necessary.

|    |    |                                  |    |    |                                       |    |
|----|----|----------------------------------|----|----|---------------------------------------|----|
|    |    | 1<br>CYCLE 1<br>Cell Collection  | 2  | 3  | 4<br>CYCLE 1<br>PROVENGE<br>Infusion  | 5  |
| 6  | 7  | 8                                | 9  | 10 | 11                                    | 12 |
| 13 | 14 | 15<br>CYCLE 2<br>Cell Collection | 16 | 17 | 18<br>CYCLE 2<br>PROVENGE<br>Infusion | 19 |
| 20 | 21 | 22                               | 23 | 24 | 25                                    | 26 |
| 27 | 28 | 29<br>CYCLE 3<br>Cell Collection | 30 | 31 | 1<br>CYCLE 3<br>PROVENGE<br>Infusion  | 2  |



**PROVENGE**<sup>®</sup>  
(sipuleucel-T)

# IT'S IMPORTANT THAT YOU KEEP YOUR SCHEDULED APPOINTMENTS

Since your personal dose of PROVENGE has a short shelf life, if you miss an infusion appointment your personal dose of PROVENGE will expire and can no longer be used. It's crucial that you help yourself in your fight against your advanced prostate cancer by maintaining your treatment schedule.

We encourage you to use the calendar inside your Patient Comfort Kit to set reminders for yourself. You can also ask family members or friends to mark your procedure dates on their calendars too, to help ensure that you do not miss any appointments.



*"The people at the infusion center made it really easy. It was a very non-invasive treatment."*

**Todd**  
PROVENGE Patient  
Tradesman

Please see inside front cover and page 6 for Important Safety Information.

# WATCH THIS VIDEO TO LEARN MORE ABOUT **PROVENGE**

**Chapter 1:** Discussing PROVENGE with your doctor and How PROVENGE works

**Chapter 2:** Patient Testimonials and Patient Process



**REFERENCES:** 1. NCCN Clinical Practice Guidelines in Oncology: Prostate Cancer. V.1.2015. *National Comprehensive Cancer Network* Web site. [www.nccn.org](http://www.nccn.org). Accessed January 7, 2013. 2. Data on file, March 2014.

**PROVENGE**<sup>®</sup>  
(sipuleucel-T)

**PROVENGE**<sup>®</sup>  
(sipuleucel-T)

Helping you help yourself

Dendreon  
*Targeting Cancer, Transforming Lives*<sup>®</sup>

©2015 Dendreon Corporation.  
All rights reserved. January 2015.  
P-A-01.15-018.00

[www.PROVENGE.com](http://www.PROVENGE.com)